



<http://www.nkrs.org.uk/>

Issue 206

NKRS Newsletter

Prepared By
Telephone (44) 07941 796476
Secretary Stephen Osborn G8JZT

D.R.J. Collings G4YIB
Email nkrs@crystaldave.com
(44) 01322 441749 secretary@nkrs.org.uk

Our next meeting will be at :
The Hurst Community Centre, Room 3, Hurst Place, Bexley, Kent, DA5 3LH

Date	Event
4th October 2022	Steve G8JZT WSPR
18th October 2022	Natter Night
1st November 2022	Annual General Meeting
15th November 2022	Robin M0RJT on Lancaster VIP day
6th December 2022	Natter Night
20th December 2022	Christmas EGM

Please note that Meetings are open to all, not just members of the NKRS



Watch this space for further announcement regarding our anniversary

NKRS
75 Years



NKRS Archives.

As I am sure you are all aware Chris G0FDZ has been working very hard collating all the information made available to him from members past and present.

This mammoth task has now been completed and the archive is now available.

Message from Chris Whitmarsh

At last everything has now been collated into the NKRS75 archive which will be available at the next club meeting.

There is no charge for club members but any additional copies are chargeable at £2 each for club funds. Please bring some form of removable media for the archive (which is approx 14 GB in size). You can bring either a memory stick of sufficient space, or the same for SD, micro SD or nano SD cards or a USB hard drive. However once you have the media home everyone should copy the entire archive to a hard mechanical drive.

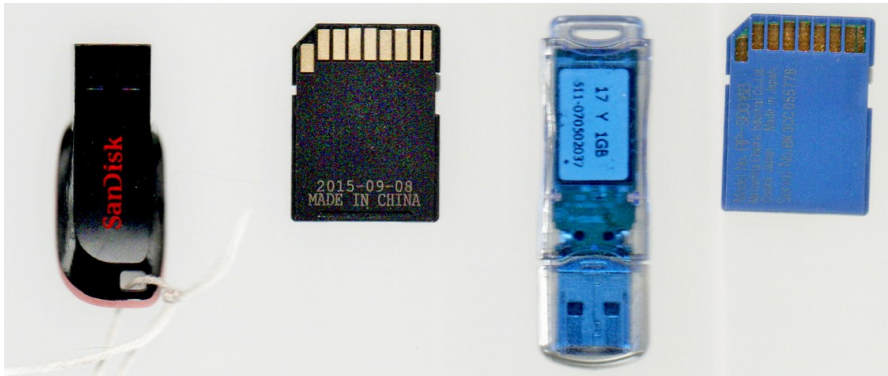
Please do copy it onto a mechanical hard drive if you don't already have it on a USB hard drive. Keeping files long term on memory sticks or other flash technology is not recommended as the files will eventually deteriorate and you will need to pay the £2 for a recopy. If you are unable to get to the meeting then please send me the removable media that you wish me to use, and the return postage, and I'll ensure that you receive the NKRS75 archive soonest.

Enjoy
Regards
Chris G0FDZ'

Thank you Chris for all the work
Dave G4YIB Chairman NKRS

See Page 3 for more information on getting your copy of the archive.

Obtaining a copy of the Archives.



If you come along to the next meeting and bring with you some recordable media with at least 16 GB free space either Chris or I will copy the archive onto it.

There will be no charge for this service but don't forget Chris's warning on the previous page about copying it onto a mechanical hard drive

The Next Meeting WSPR by Steve Osbourne G8JZT

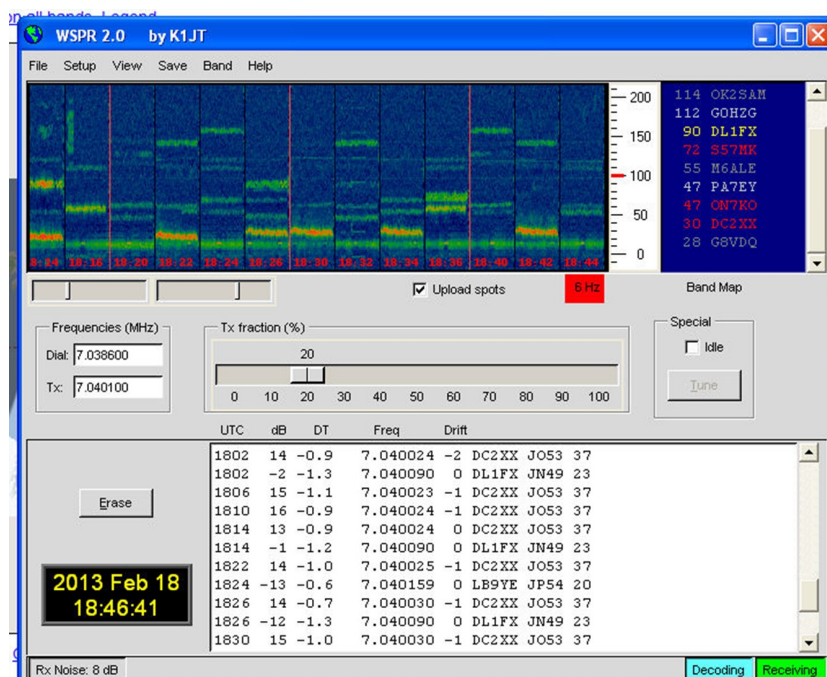
The next meeting is a talk by our Secretary Steve Osbourne G8JZT on the Joe Turner program **WSPR**.

Please try to attend to give him your support.

From Wikipedia

WSPR (pronounced "whisper") stands for "Weak Signal Propagation Reporter". It is a protocol, implemented in a computer program, used for weak-signal radio communication between amateur radio operators. The protocol was designed, and a program written initially, by Joe Taylor, K1JT. The software code is now open source and is developed by a small team. The program is designed for sending and receiving low-power transmissions to test propagation paths on the MF and HF bands.

WSPR implements a protocol designed for probing potential propagation paths with low-power transmissions. Transmissions carry a station's callsign, Maidenhead grid locator, and transmitter power in dBm. The program can decode signals with a signal-to-noise ratio as low as -28 dB in a 2500 Hz bandwidth. Stations with internet access can automatically upload their reception reports to a central database called WSPRnet, which includes a mapping facility.



WSPR is another program brought to us by the American astrophysicist Joseph Hooton Taylor Jr. (born March 29, 1941). Otherwise known as Joe Turner K1JT. Nobel Prize laureate in Physics for his discovery with Russell Alan Hulse of a "new type of pulsar, a discovery that has opened up new possibilities for the study of gravitation."

Joe's software can be downloaded from <https://physics.princeton.edu/pulsar/K1JT/index.html>

The download links on the pages for each program retrieve pre-compiled installation packages for Microsoft Windows, Linux, and macOS.

The WSPR mode is now included in program WSJT-X.

You may find the article by Tony Fishpool G4WIF in newsletter 180 Feb 2020 interesting.

Epping Ongar Railway.

Epping-Ongar Line



Passengers cannot currently board or leave the train at Epping Forest



Ongar Station



I suppose I have been around too long because I do remember underground trains running to Ongar although you had to change at Epping.

The line was originally opened by the Great Eastern Railway in 1865 as an extension to an existing line from Stratford to Loughton which opened in 1856. In 1949 the London Passenger Transport Board took over the line from British Railways and electrified it to form part of the Central Line. At that time direct trains from Ongar to London ceased and passengers had to change at Epping.

The Epping Ongar section continued to be steam operated until 1957 when it was electrified. Unfortunately because of the length of the feed from the power source it could only operate 4 car trains because the voltage drop was too great.

It was hoped that the electrification of the line would add to its use, but because of the [Green Belt](#) zoning the usage of the line was not increasing. When it was realised that it was making a loss of £7 for each passenger journey, carrying only 80 passengers a day, and needed extensive and expensive maintenance work they closed it on 30 September 1994. The line and the stations were maintained for a while after closure and there was a rumour that this was in case the Cabinet had to be evacuated to the Kelvenden Hatch Secret Nuclear Bunker.





In 1998 The line was bought by Pilot Developments now known as Epping Ongar Railway Ltd. The Ongar Railway Preservation Society also entered an offer to buy the line. Their offer was for £339,500.

On Sunday 10 October 2004 the line re -opened providing an hourly service between Ongar and North Weald, run by volunteers.

After an ownership change and extensive restoration, the line re-opened yet again in May 2012 This time it was classified as a heritage steam railway with an increase in service frequency between Ongar, North Weald and Coopersale halt Epping Forest (where there are no facilities for alighting at present).

With the changes made to the Epping Ongar Railway Line, the Ongar railway station and the



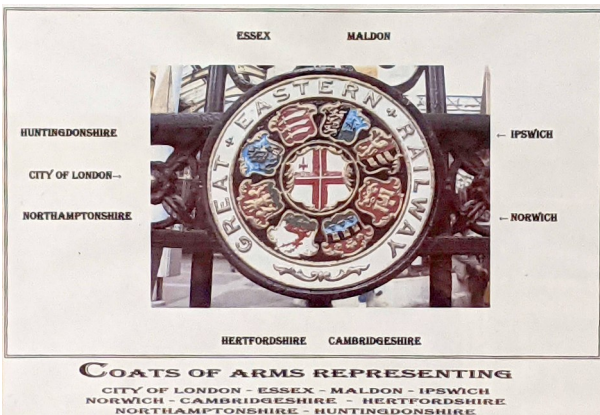
North Weald railway were also renovated but Blake Hall station no longer exists.

Epping Ongar Railway is the longest heritage railway in Essex. It runs from Ongar to North Weald and into Epping Forest. Epping Ongar is the closest heritage railway to the city.

On open days heritage buses run a service between Epping and North Weald stations so you can go most of the way on the Central Line

Follow the link for more information.

[Welcome aboard the Epping Ongar Railway \(eorailway.co.uk\)](http://www.eorailway.co.uk)





One unusual feature of the line is its continuing nominal importance to the London Underground. In 1971/72 the London Underground was remeasured in kilometres. The then most easterly point, Ongar, was chosen as the zero point, and remains so to the present. The marker post labelled FP can be seen in the lower right of the above picture.



The RSGB 2022 convention



The RSGB 2022 convention is being held on the 7th to 9th October at Kents Hill Park, Milton Keynes. You can book online but the cut off date is 2nd October. This year a number of presentations will be live streamed and many others will be recorded and released during the coming months.

Cray Valley Radio Society surplus and junk sale



This year's surplus and junk sale will take place on Thursday 6th October at 19.30. Guy G0UKN will be the auctioneer for the evening while Trevor M1TAD and Dave G8ZZK will be running the table top sales. See <https://cvrs.org/>

Staying with the railway theme but something different.

I am not a great believer in petitions but if I am asked to publish them in the newsletter I will even if I myself may not agree with them.

However I read today that it is planned that from December, Woolwich, Bexleyheath and Blackheath will lose off peak Charing Cross trains, these are valuable services to the West End, although the Elizabeth is open Charing Cross trains are still well used. (and frequently so by me)

This will mean that travelling to Charing Cross off peak and weekends will involve changing trains at London Bridge which will add to journey times.

Southeastern are using the new Elizabeth line as an excuse to cut services to Charing Cross yet most of the areas who rely on Charing Cross are too far away to fully benefit from it, and the Elizabeth Line does not go to Charing Cross..

The proposal is also to axe the Sunday service between Lewisham and Blackheath to the Woolwich line, breaking a popular and well used link.

Please consider signing the petition on the link below. It may not change anything but not signing it certainly won't help.

<https://www.change.org/p/keep-charing-cross-trains-on-the-woolwich-bexleyheath-lines>

International Coffee Day (1 October 2022)



Those who know me well understand that my favourite all time drink is coffee. Hot, cold, iced, left over from the previous night I don't care.

I Love Coffee

After hearing about International Coffee Day I thought I would find out more about it so here is what Wikipedia have to say.

From wiki

International Coffee Day (1 October) is an occasion that is used to promote and celebrate coffee as a beverage, with events now occurring in places around the world. The first official date was 3 October 2015, as agreed by then International Coffee Organization and was launched in Milan. This day is also used to promote fair trade coffee and to raise awareness for the plight of the coffee growers. On this day, many businesses offer free or discounted cups of coffee. Some businesses share coupons and special deals with their loyal followers via social networking. Some greeting card companies sell International Coffee Day greeting cards as well as free e-cards.

Well didn't send any greetings cards or e cards to celebrate, just drunk a few cups to toast those who work in the fields to produce it.



Due to the current cost of electricity the light at the end of the tunnel has now been permanently switched off.



Left

Went away with my daughter M3YIB for a couple of days and this was a very nice restaurant that we had a really good meal in.

The Refectory
Milford,
Godalming



Left

The tourists are still coming to London here are a couple of dodgy ones near Tower Bridge

Right

Most stations have a drop off point but Borehamwood Station has a Kiss and Drop point

Nice Gesture !



If you get a chance visit the Line That Never Was exhibition at Elstree & Borehamwood Museum. You can go to Borehamwood free with a freedom pass direct from Abbey Wood. The exhibition will run till the 22nd October 2022

<https://www.creativehertfordshire.com/elstree-borehamwood-museum/off-the-rails-the-line-that-never-was/>

That's it for this issue, please try and come to Steve's talk on Tuesday and please bring some recordable media for your copy of the NKRS archives

Dave G4YIB